

ALSIDENT® SYSTEM 75

Chemical Resistant (CR)



Product Information



A cleaner working environment



SYSTEM 25

SYSTEM 50

SYSTEM 63

SYSTEM 75 PP

SYSTEM 100



Product Description



System 75 – Chemical Resistant (CR)

Alsident® System 75 CR – airflow between 80 –180 m³/h.

System 75 Chemical Resistant is suitable in working environments where there are special requirements for chemical resistance such as laboratories, hospitals, chemical-, pharmaceutical- and food industry.

The standard Alsident® System 75 CR extraction arms are available in various types that are complementary to each other with ranges up to 1.990 mm. The System 75 CR extraction arms are easily mounted with standard brackets for table, wall or ceiling. In combination with the wide range of hood designs this makes it possible to choose an extraction arm adapted for each work situation.

Alsident® System 75 CR extraction arms are self-sustaining with an internal bearing spring, pipes of Polypropylene (PP) with a diameter of 75 mm and joints of Polypropylene (PP). All internal components are of acid-proof stainless steel (AISI 316L). The longest model for wall and ceiling mounted is available with two external gas springs. The construction constitutes a very user-friendly extraction arm that is easy to adjust to the source of the pollutant during the working process.

An extraction arm from Alsident® System consists of three parts: An extraction arm, a hood and a mounting bracket. Each part must be ordered separately.

In addition to the standard range, Alsident® System 75 CR offers special customized solutions. The Alsident® technical department is always ready to help you find the best solution.

Alsident® offers short delivery time for both standard productions and special solutions.

Product Specification



Technical Specifications

Recommended Airflow:	Normal:	140 m ³ /h
	Minimum:	80 m ³ /h
	Maximum:	180 m ³ /h

Air Temperature: -15°C – +90°C

Material:	Pipes:	Polypropylene (PP) – white
	Joints:	Polypropylene (PP) – red or white
	O-rings:	Polyethylene (PE)
	Mounting Flanges:	Polypropylene (PP) – red or white
	Damper:	Polypropylene (PP)
	Thumbscrew:	Polypropylene (PP) – black
	Threaded Stay:	Acid-proof stainless steel (AISI 316L)
	Spring ¹⁾ :	Acid-proof stainless steel (AISI 316L)
Gas spring ²⁾ :	Stainless Steel ³⁾	

1) Extraction arms with ranges up to 1550 mm

2) Available on models 75-9065 and 75-9090

3) Also available in stainless steel on request

Abbr.:	PP:	Polypropylene <i>Shatterproof and chemical resistant</i>
	PE:	Polyethylene
	PETG:	Polyethylen Therephthalat, Glycol-modified <i>Transparent and resistant to solvents</i>

Local Extraction for workplaces incl. all materials for mounting.

All components RoHS-compatible according to the directive 2002/95/EF (RoHS).

Key to the signatures

SYSTEM NO.	VERSION	CHAPTER	PAGE
75	AL Aluminium	GI General Information	01
		TM Table Mounted	
		WM Wall Mounted	
		CM Ceiling Mounted	



Product Overview

Table mounted

SYSTEM 25

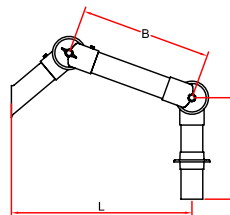
SYSTEM 50

SYSTEM 63

SYSTEM 75 PP

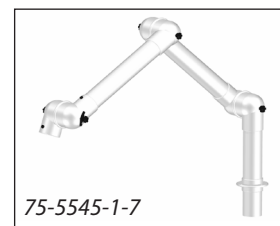
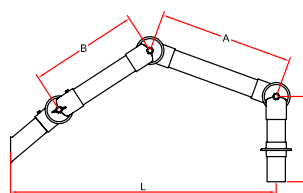
SYSTEM 100

Table mounted (TM), 2-joint



Diam. [mm]	L [mm]	B [mm]	C [mm]	Weight ca. [kg]	Part No.	Colour of joint	
						Red	White
75	550	350	350	1.5	75-35-1-7	-4	-5
75	650	450	350	2.0	75-45-1-7	-4	-5
75	750	550	350	2.3	75-55-1-7	-4	-5

Table mounted (TM), 3-joint



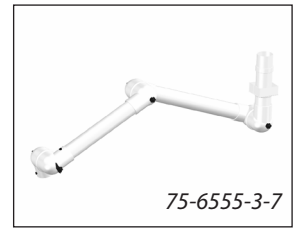
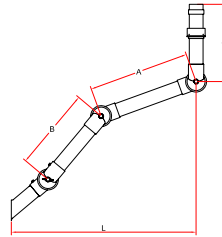
Diam. [mm]	L [mm]	A [mm]	B [mm]	C [mm]	Weight ca. [kg]	Part No.	Colour of joint	
							Red	White
75	830	350	350	350	1.9	75-3535-1-7	-4	-5
75	1105	550	450	350	2.5	75-5545-1-7	-4	-5
75	1290	650	550	350	2.7	75-6555-1-7	-4	-5
75	1620	900	650	350	3.0	75-9065-1-7	-4	-5



Product Overview

Wall- and Ceiling mounted

Wall- and Ceiling Mounted (WM/CM), 3-joint



Diam. [mm]	L [mm]	A [mm]	B [mm]	C [mm]	Weight ca. [kg]	Part No.	Colour of joint	
							Red	White
75	795	350	350	350	2.0	75-3535-3-7	-4	-5
75	1200	350	900	350	2.3	75-3590-3-7	-4	-5
75	1060	550	450	350	2.6	75-5545-3-7	-4	-5
75	1230	650	550	350	2.8	75-6555-3-7	-4	-5
75	1550	900	650	350	3.1	75-9065-3-7	-4	-5
75	1660	900	650	350	3.4	75-9065-3-22-7*	-4	-5
75	1990	900	900	350	4.1	75-9090-3-22-7**	-4	-5

*) With 1 external gas spring

***) With 2 external gas springs

SYSTEM 25

SYSTEM 50

SYSTEM 63

SYSTEM 75 PP

SYSTEM 100



Accessories Overview

Extractor tube – Hoods

Extractor tube (250 mm)

Part No.: 1-7525-7-4 /-5

Recommended for small concentrated sources of pollution. Efficient as it gets close to the source without obstructing the work process.

Tip with funnel increases the extraction efficiency.

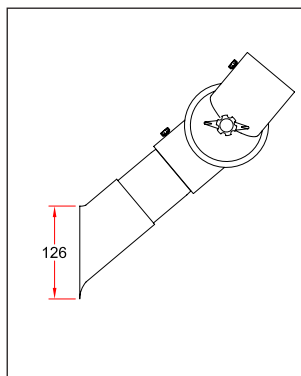
Material

Tube: Polypropylene (PP)¹, white

Tip: Polypropylene (PP)¹, red or white

Part No.	Red tip	White tip
1-7525	-4	-5

1) See page GI02



Dome Hood (diam. 385 mm)

Part No.: 1-7535-7-4 /-5

Recommended for light fumes, gases and small open vessels. Increased stability due to reinforced rim of the hood. Increased efficiency at an angled position.

Material

Hood³⁾: Polypropylene (PP)¹, white

Flange: Polypropylene (PP)¹, red or white

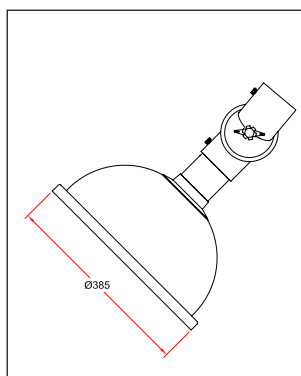
Connection tube²⁾: Polypropylene (PP)¹, white

1) See page GI02

2) Separately enclosed at delivery

3) Also available in clear PETG on request

Part No.	Flange, red	Flange, white
1-7535-7	-4	-5



Flat Screen (330 x 240 mm)

Part No.: 1-753324-7-4 /-5

Recommended when extracting heavy gases and fumes. High efficiency when placed vertically on a surface e.g. a table. Practical rim for easy positioning of the hood. Gets close to the source without obstructing the work process.

Material

Hood³⁾: Polypropylene (PP)¹, white

Flange: Polypropylene (PP)¹, red or white

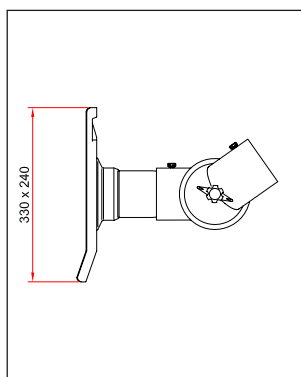
Connection tube²⁾: Polypropylene (PP)¹, white

1) See page GI02

2) Separately enclosed at delivery

3) Available in clear PETG on request

Part No.	Flange, red	Flange, white
1-753324-7	-4	-5



Accessories Overview



Square Hood (420 x 320 mm)

Part No.: 1-754232-7-4 /-5

Recommended for both light and heavy fumes, gases and for open vessels, as this hood is suited for horizontal position above and vertical position behind the source of pollution. Good efficiency when placed vertically on a surface e.g. a table. Increased stability due to reinforced rim of the hood.

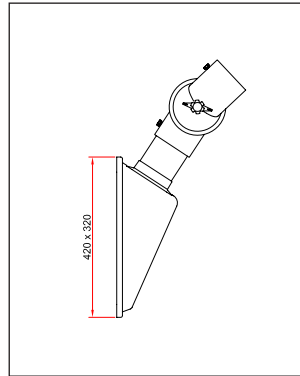
Material

Hood ³⁾: Polypropylene (PP)¹, white
 Flange: Polypropylene (PP)¹, red or white
 Connection tube²⁾: Polypropylene (PP)¹, white

1) See page GI02

2) Separately enclosed at delivery

3) Also available in clear PETG on request



Part No.	Flange, red	Flange, white
1-754232-7	-4	-5

Dome Hood (diam.200 mm)

Part No.: 1-7524-7-4 /-5

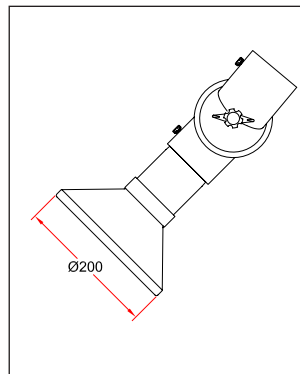
Recommended for light fumes, gases, and open vessels.

Material

Hood: Aluminium, powder coated white or red
 Flange: Polypropylene (PP)¹, white or red
 Connection tube: Polypropylene (PP)¹, white

Part No.	Red hood	White hood
1-7524-7	-4	-5

1) See page GI02





Accessories Overview

Brackets and Reducer

Wall bracket

Part No.: 2-195 and 2-195-10-5

Used for System 75 Wall Mounted Extraction Arms. The wall bracket is made of white polyester powder coated steel.

Other colours available on request.

② The bracket with both sides closed is suitable for all applications with special requirements to cleaning.

See photo page WM 03.

Colour	Open sides	Closed sides
White	2-195	2-195-10-5

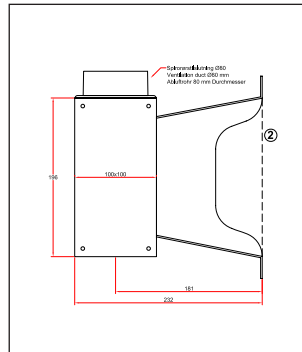


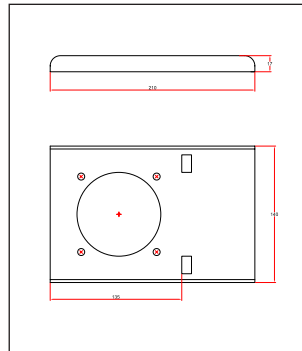
Table bracket

Part No.: 2-7510

Used to mount System 75 Table Mounted Extraction Arms on table side which makes it removable for mobile installations.

Made of black polyester powder coated steel.

Other colours available on request.



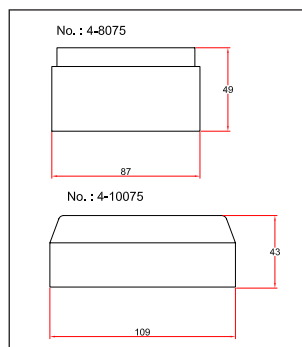
Reducer

Part No.: 4-10075 / 4-8075

Used to connect System75 Extraction Arms to duct. Made of white polypropylene (PP).

Available in two sizes.

Reduces from/to [mm]	Part No.
80/75	4-8075
100/75	4-10075





Accessories Overview

Brackets and Ceiling Columns

Ceiling columns

Used for mounting the System 75 Ceiling Mounted Extraction Arms. The ceiling column is made of white polyester powder coated steel.

Available in two models with side connection or top connection to duct.

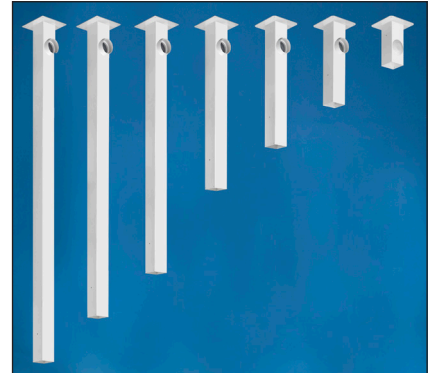
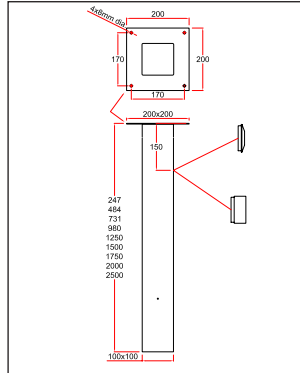
For standard lengths see below.

Other lengths, colours and acidproof stainless steel available on request.

Connection Diameter:

With side connection: 80 mm

With top connection: max. 100 mm



Length [mm]	Weight app. [kg]	Top connection	Side connection
250	2.0	2-250-20	-
500	3.0	2-500-20	2-500-80
750	3.8	2-750-20	2-750-80
1000	4.5	2-1000-20	2-1000-80
1250	5.4	2-1250-20	2-1250-80
1500	6.1	2-1500-20	2-1500-80
1750	7.1	2-1750-20	2-1750-80
2000	7.9	2-2000-20	2-2000-80
2500	9.4	2-2500-20	2-2000-80

Support Bracket for long ceiling column

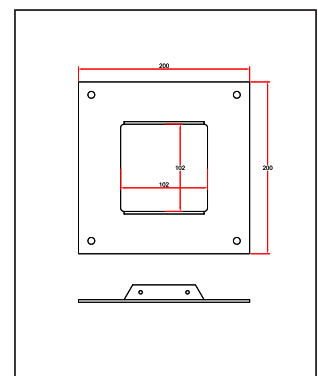
Part No.: 2-75-5

For extra support of ceiling columns longer than 2 m.

For support with wire to check or by fastening to ceiling rail system.

The support bracket is made of steel with a white polyester powder-coating.

Other colours available on request.



SYSTEM 25

SYSTEM 50

SYSTEM 63

SYSTEM 75 PP

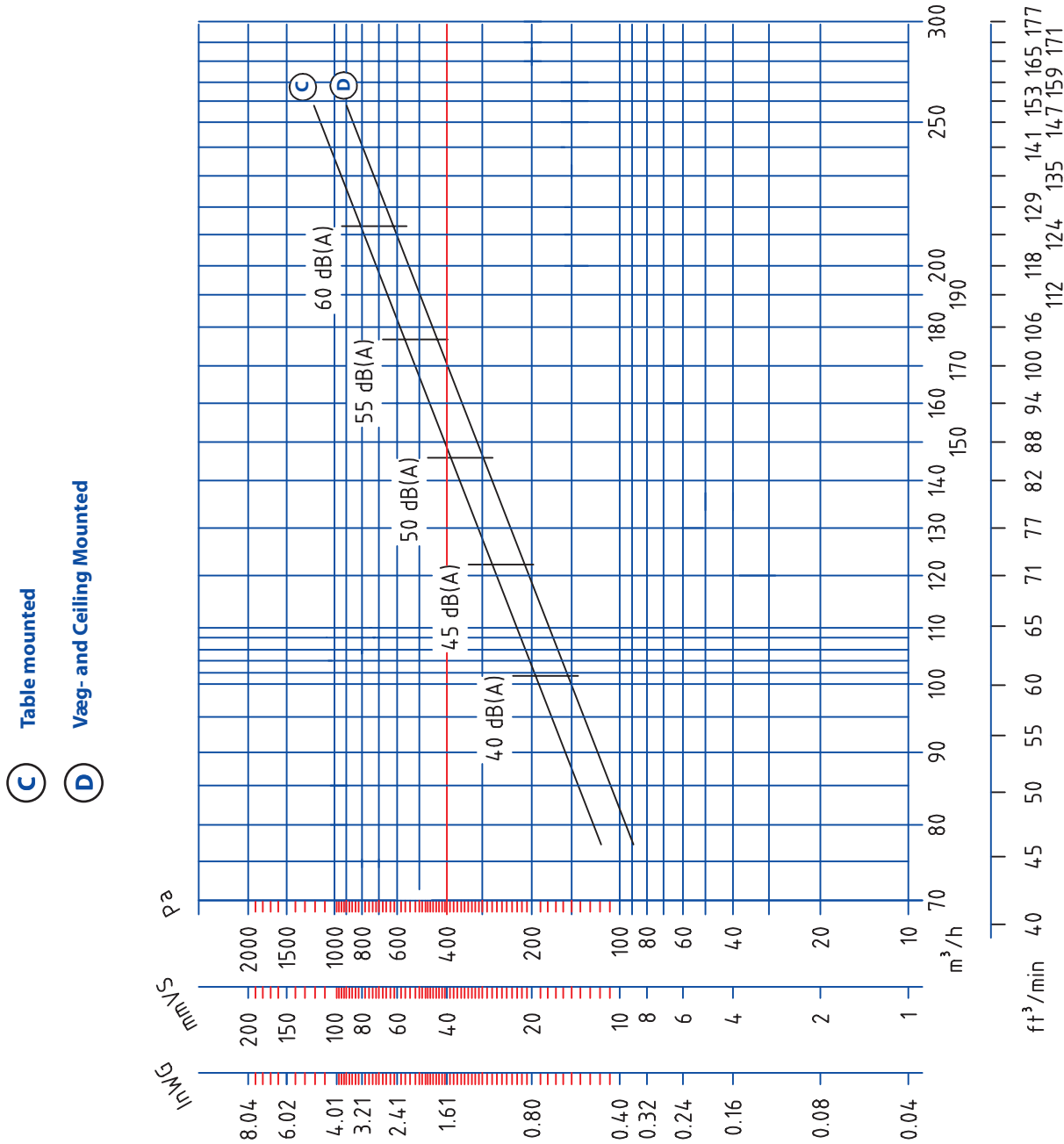
SYSTEM 100

Technical Description



Pressure Drop Chart

Tested by Danish Technological Institute (Teknologisk Institut)



SYSTEM 25

SYSTEM 50

SYSTEM 63

SYSTEM 75 PP

SYSTEM 100

Spare Parts List

Joint with Damper



SYSTEM 25

SYSTEM 50

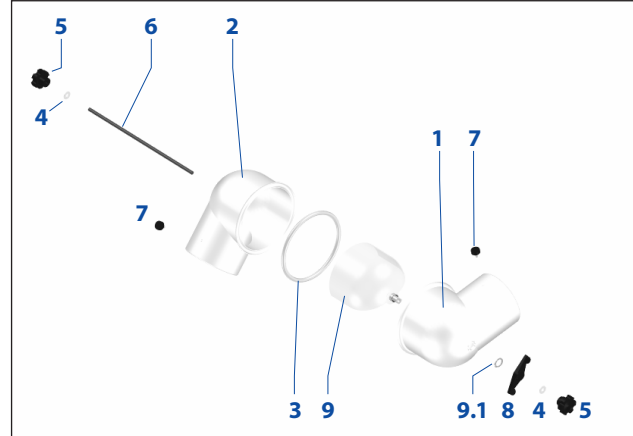
SYSTEM 63

SYSTEM 75 PP

SYSTEM 100

Joint with Damper

4-75-4 /-5



Pos. Product No.

A 4-75-4 /-5

Pos.	Part No.	Red	White	Description	A [pieces applied]
1	4-7512	-4	-5	Joint, 12 mm	1
2	4-755-0	-4	-5	Joint, 5 mm	1
3	5-100-6			O-ring	1
4	5-75			Teflon Washer	2
5	5-75-5			Thumbscrew, 5 mm	2
6	5-75-5-221			Threaded Stay	1
7	5-75-4			Thumbscrew, 4 mm	2
8	5-5075			Wing for Damper	1
9	800-4-75			Damper	1
9.1	5-12-411			Seegerring	1



Working Area

Table mounted with Extractor tube

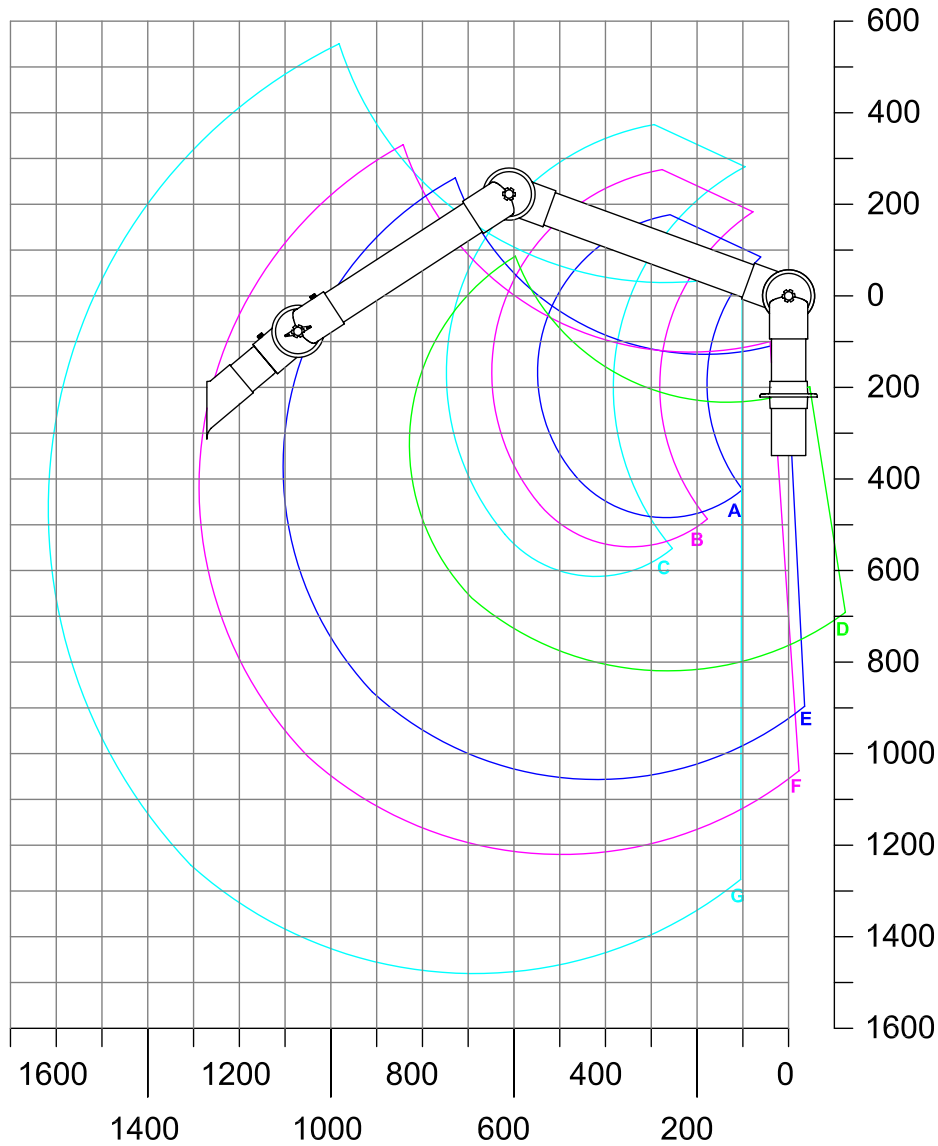
SYSTEM 25

SYSTEM 50

SYSTEM 63

SYSTEM 75 PP

SYSTEM 100



- | | |
|------------------------|------------|
| A: Model 75-35-1-7-5 | R: 550 mm |
| B: Model 75-45-1-7-5 | R: 650 mm |
| C: Model 75-55-1-7-5 | R: 750 mm |
| D: Model 75-3535-1-7-5 | R: 830mm |
| E: Model 75-5545-1-7-5 | R: 1105 mm |
| F: Model 75-6555-1-7-5 | R: 1290mm |
| G: Model 75-9065-1-7-5 | R: 1620 mm |

Accessory: Extractor tube No. 1-7525-7-5

Note:

The working area of the arm is defined from the center of the opening of the accessory.

The working area changes according to type of accessory and positioning.

When choosing the arm we recommend that the stationary working position of the accessory is not placed in the highest or lowest part of the working area.

(All measurements in mm)



Mounting Options

Table Mounted Option

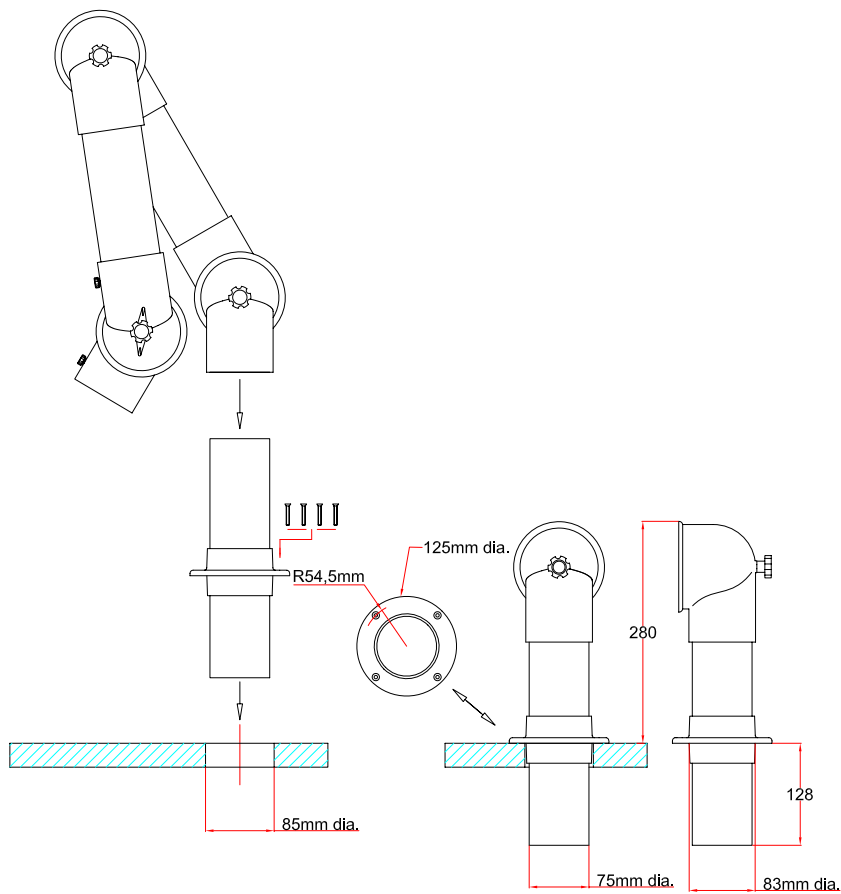
Directly on Table

System 75 Extraction Arm mounted directly on table with flange screwed to table plate.

Accessory

No brackets used.

Dimensions



(All measurements in mm)

Mounting Options



Table Mounted Option with Table Bracket

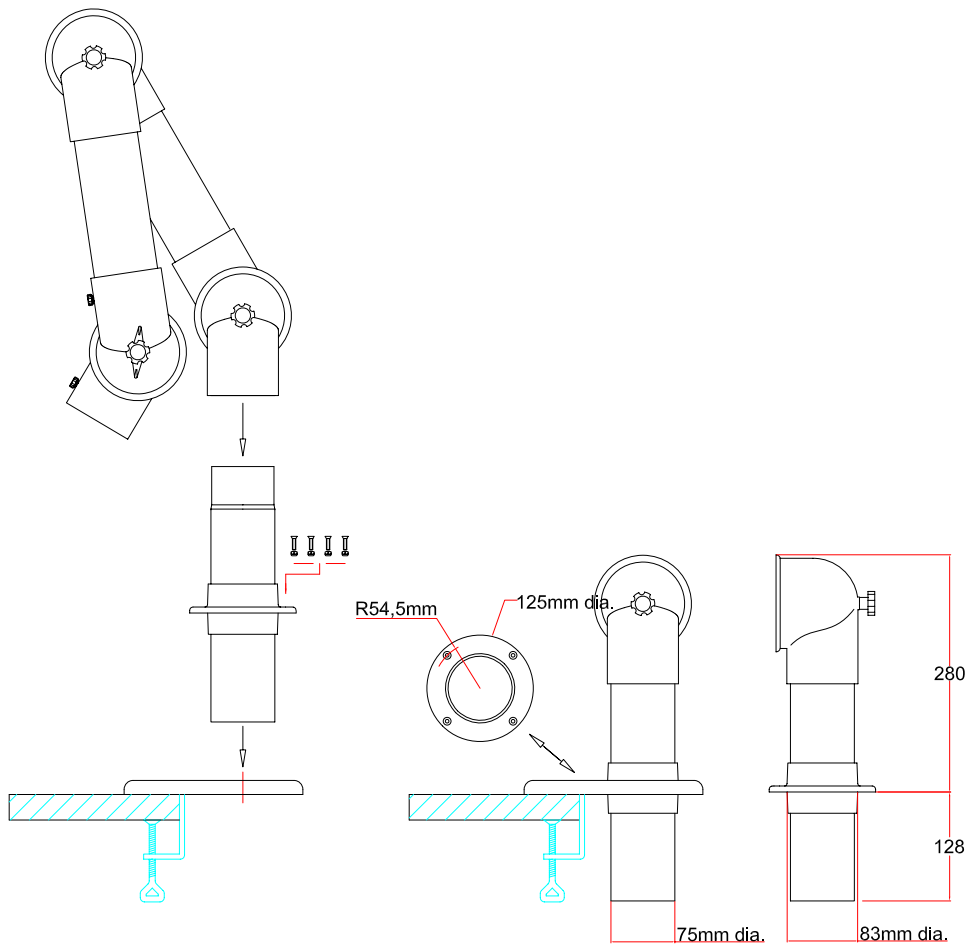
With table bracket

System 75 Extraction Arm mounted on table side with a table bracket. Very functional option when impossible to mount directly on table or when a mobile installation is required.

Accessory

Table bracket, Part No.: 2-7510

Dimensions



(All measurements in mm)



Table bracket

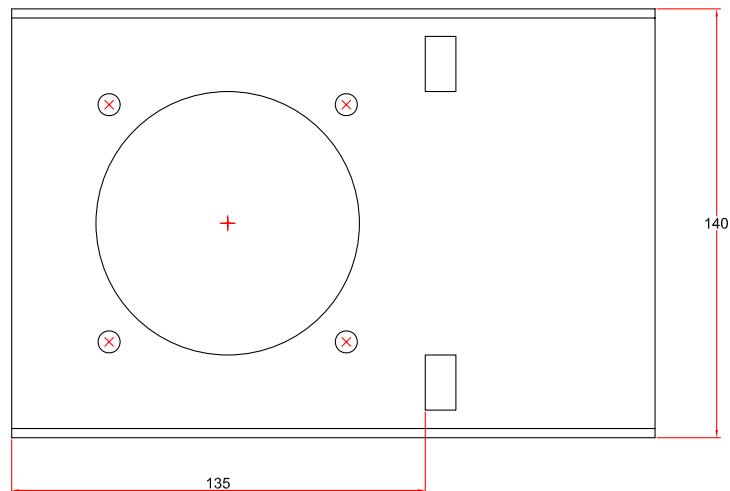
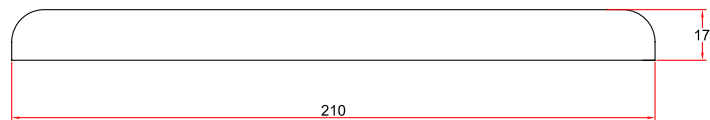
Technical Description

Part No.: 2-7510

Used to mount system 75 Table Mounted Arms on table side.
Removable for mobile installations. Made of white polyester powder coated steel.
Other colours available on request.



Dimensions



(All measurements in mm)

Spare Parts



SYSTEM 25

SYSTEM 50

SYSTEM 63

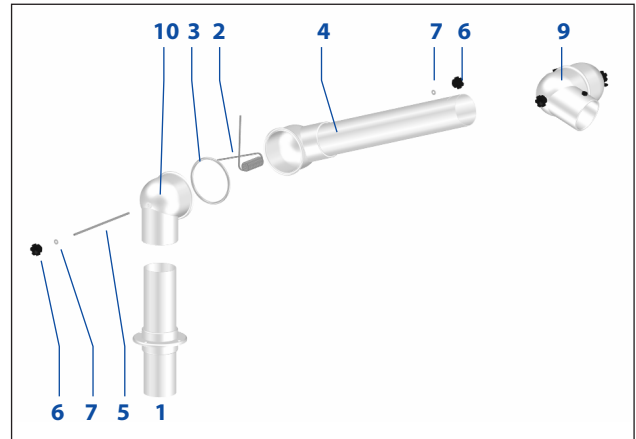
SYSTEM 75 PP

SYSTEM 100

(A) 75-35-1-7

(B) 75-45-1-7

(C) 75-55-1-7

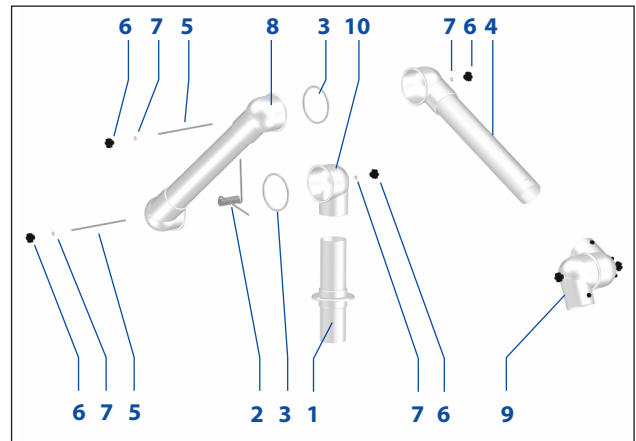
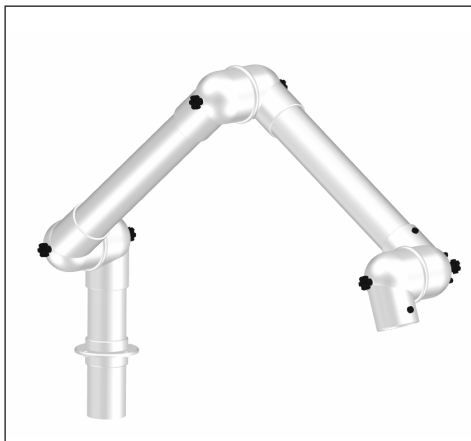


(D) 75-3535-1-7

(E) 75-5545-1-7

(F) 75-6555-1-7

(G) 75-9065-1-7



Spare Parts List – see next page

Spare Parts List



SYSTEM 25

SYSTEM 50

SYSTEM 63

SYSTEM 75 PP

SYSTEM 100

Pos.	Product No.	Red	White	Joints
A	75-35-1-7	-4	-5	2-led
B	75-45-1-7	-4	-5	2-led
C	75-55-1-7	-4	-5	2-led
D	75-3535-1-7	-4	-5	3-led
E	75-5545-1-7	-4	-5	3-led
F	75-5545-1-7	-4	-5	3-led
G	75-9065-1-7	-4	-5	3-led

Pos.	Part No.	Description	A	B	C	D	E	F	G
			[pieces applied]						
1	3-7540-1-4 /-5	C-pipe TM 300	1	1	1	1	1	1	1
2	5-75-2-4-01	Spring 4 mm (2-joint)		1	1				
2	5-75-3-4-01	Spring 4 mm				1			
2	5-75-3-5-01	Spring 5 mm					1	1	1
3	5-100-6	O-ring	1	1	1	2	2	2	2
4	3-7535-9-4 /-5	B-pipe 350	1			1			
4	3-7545-9-4 /-5	B-pipe 450		1			1		
4	3-7555-9-4 /-5	B-pipe 550			1			1	
4	3-7565-9-4 /-5	B-pipe 650							1
5	5-75-5-211	Threaded Stay	1	1	1	2	2	2	1
6	5-75-5	Thumbscrew, 5 mm	2	2	2	4	4	4	4
7	5-75	Teflon Washer	2	2	2	4	4	4	4
8	3-7535-8-4 /-5	A-pipe 350				1			
8	3-7555-8-4 /-5	A-pipe 550					1		
8	3-7565-8-4 /-5	A-pipe 650						1	
8	3-7590-8-4 /-5	A-pipe 900							1
9	4-75-4 /-5	Joint with Damper*	1	1	1	1	1	1	1
10	4-755-4 /-5	Joint 5 mm	1	1	1	1	1	1	1

*) Spare Parts List for Joint with Damper – see General Information

When ordering spare parts please quote:

Product No.	eg.:	75-55-1-7-5 (white)
Description	-	B-pipe 550
Part No.	-	3-7555-9-7-5
Quantity	-	1 pc.

If you wish to customize the arm with a spare part which is not a constituent part of the particular model, please contact your Alsident dealer.



Mounting Instruction

With internal spring

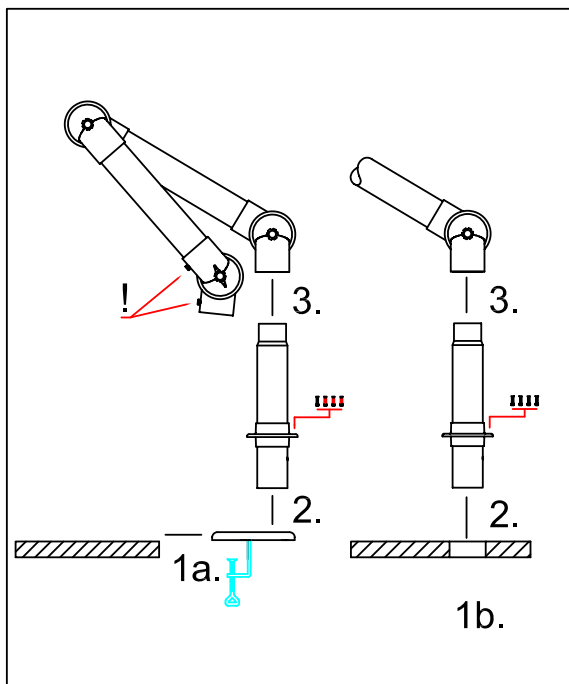


Fig. 1:

On account of the packaging the extraction arm is delivered in two parts.

- 1a. Mount the table bracket on the edge of the table and tighten the clamps.
- 1b. Make a hole in the table with a diameter of 85mm where the extraction arm is to be placed.
2. Place the socket pipe in the hole of the table/bracket and fasten the flange with the included screws.
3. Place the joint of the extraction arm on the socket pipe. Be aware that the spring goes into the pipe and the fingerscrews (!) face forward.

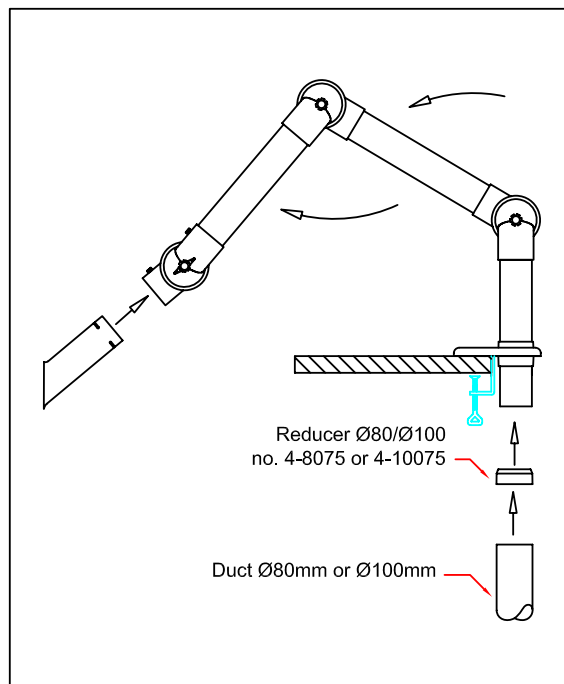


Fig. 2:

1. Connect the extraction arm to the main ventilation duct with the Alsident® reducer.
2. Unfold the extraction arm in the direction of the arrows.
3. Place the connection pipe of the accessory in the joint.
4. Turn the slit on the connection pipe towards the small fingerscrew on the joint. When screwed in the fingerscrew will hold the accessory in place in the joint.
5. Finally make sure the damper is open.
6. The extraction arm is now ready for use.



Working Area

Wall Mounted with Extractor tube

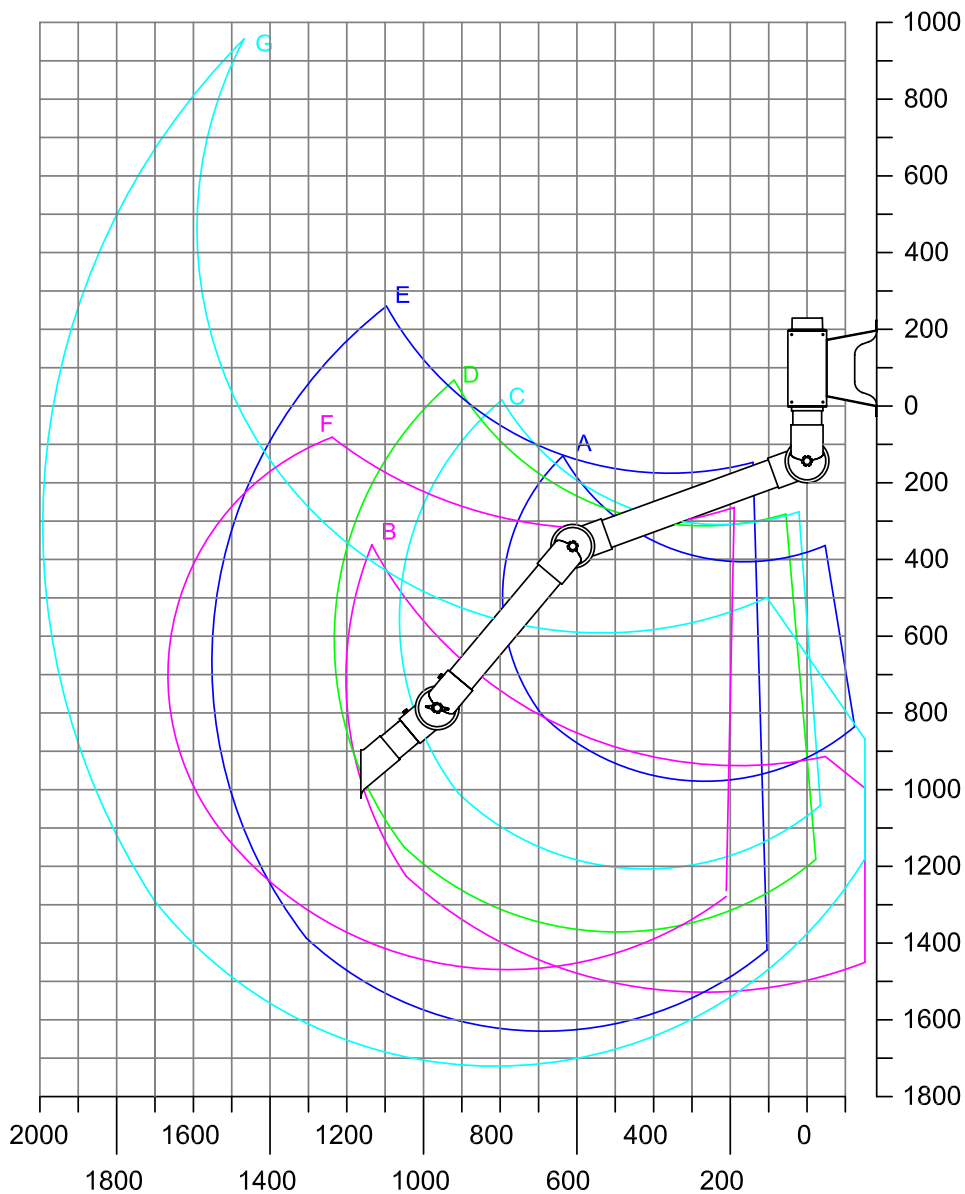
SYSTEM 25

SYSTEM 50

SYSTEM 63

SYSTEM 75 PP

SYSTEM 100



- | | |
|---------------------------|------------|
| A: Model 75-3535-3-7-5 | R: 795 mm |
| B: Model 75-3590-3-7-5 | R: 1200 mm |
| C: Model 75-5545-3-7-5 | R: 1060 mm |
| D: Model 75-6555-3-7-5 | R: 1230mm |
| E: Model 75-9065-3-7-5 | R: 1550 mm |
| F: Model 75-9065-3-22-7-5 | R: 1660 mm |
| G: Model 75-9090-3-22-7-5 | R: 1990 mm |

Accessory: Extractor tube No. 1-7525-7-5

Note:

The working area of the arm is defined from the center of the opening of the accessory.

The working area changes according to type of accessory and positioning.

When choosing the arm we recommend that the stationary working position of the accessory is not placed in the highest or lowest part of the working area.

(All measurements in mm)

Mounting Options



Wall Mounted Option

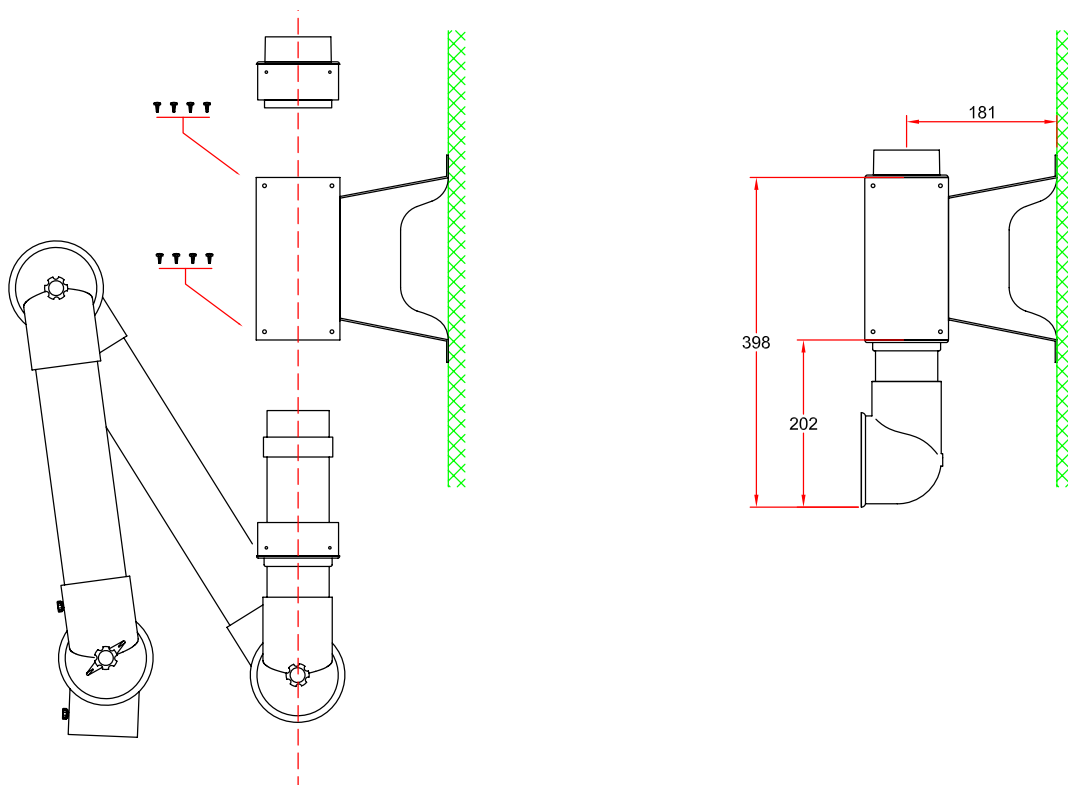
Wall Mounted

System 75 Extraction Arm – wall mounted with Wall Bracket.

Accessory:

Wall bracket, Part No.: 2-195

Dimensions



(All measurements in mm)



Wall bracket

Technical Description

Part No.: 2-195 and 2-195-10-5

Used for System 75 Wall mounted Extraction Arms.

Made of steel with a white polyester powder-coating on all surfaces

Other colours and acid-proof stainless steel (AISI 316L) available on request.

Colour	Open sides	Closed sides
White	2-195	2-195-10-5



SYSTEM 25

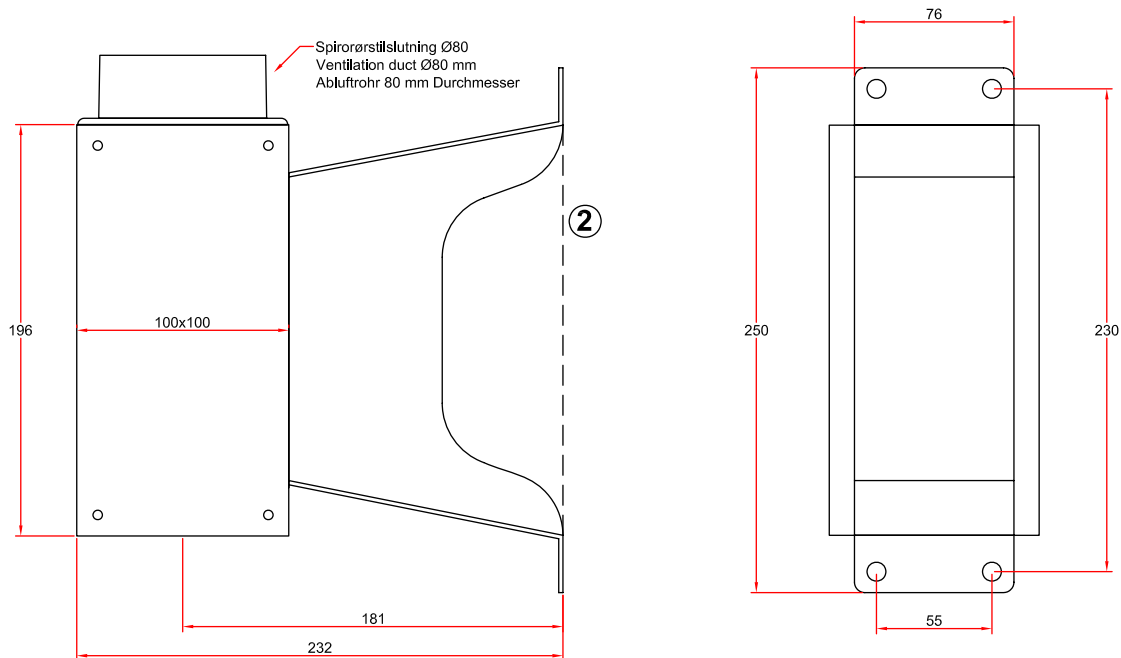
SYSTEM 50

SYSTEM 63

SYSTEM 75 PP

SYSTEM 100

Dimensions



(All measurements in mm)

Spare Parts



SYSTEM 25

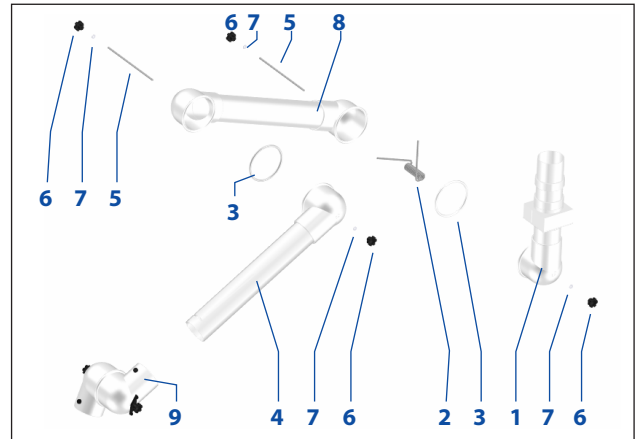
SYSTEM 50

SYSTEM 63

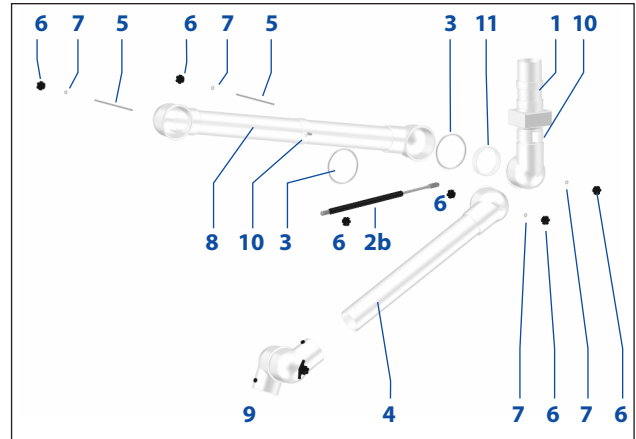
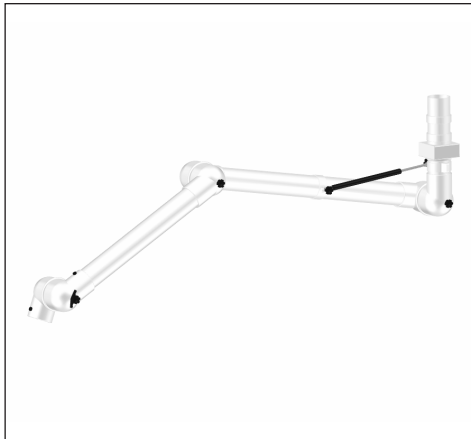
SYSTEM 75 PP

SYSTEM 100

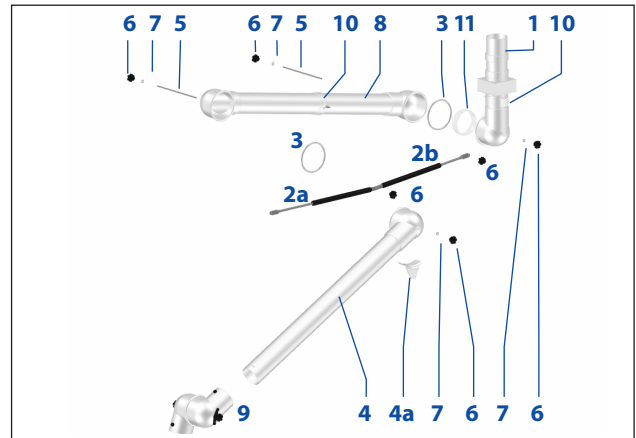
(A) 75-3535-3-7 (B) 75-3590-3-7 (C) 75-5545-3-7 (D) 75-6555-3-7 (E) 75-9065-3-7



(F) 75-9065-3-22-7



(H) 75-9090-3-22-7



Spare Parts List – see next page



Spare Parts List

Pos.	Product No.	Red	White	Joints
A	75-3535-3-7	-4	-5	3-led
B	75-3590-3-7	-4	-5	3-led
C	75-5545-3-7	-4	-5	3-led
D	75-6555-3-7	-4	-5	3-led
E	75-9065-3-7	-4	-5	3-led
F	75-9065-3-22-7	-4	-5	3-led
G	75-9090-3-22-7	-4	-5	3-led

Pos.	Part No.	Description	A [pieces applied]	B	C	D	E	F	G
1	3-7530-3-7-4 /-5	C-pipe CM 300	1	1	1	1	1	1	1
2	5-75-3-4-00	Spring WM/CM 4 mm	1						
2	5-75-3-5-00	Spring WM/CM 5 mm		1	1	1			
2	5-75-3-6-00	Spring WM/CM 6 mm					1		
2a	800-100-100-1-050	Gas Spring 100N (Push)							1
2b	800-100-150-2-050	Gas Spring 150N (Pull)						1	1
3	5-100-6	O-ring	2	2	2	2	2	2	2
4	3-7535-9-7-4 /-5	B-pipe 350	1						
4	3-7545-9-7-4 /-5	B-pipe 450			1				
4	3-7555-9-7-4 /-5	B-pipe 550				1			
4	3-7565-9-7-4 /-5	B-pipe 650					1	1	
4	3-7590-9-7-4 /-5	B-pipe 900		1					1
4a	4-100-01-5	Angle for joint B							1
5	5-75-5-211	Threaded Stay	2	2	2	2	2	2	2
6	5-75-5	Thumbscrew	4	4	4	4	4	6	6
7	5-75	Teflon Washer	4	4	4	4	4	4	4
8	3-7535-8-7-4 /-5	A-pipe 350	1	1					
8	3-7555-8-7-4 /-5	A-pipe 550			1				
8	3-7565-8-7-4 /-5	A-pipe 650				1			
8	3-7590-8-7-4 /-5	A-pipe 900					1		
8	3-7590-0-7-8-4 /-5	A-pipe 900 gas spring						1	1
9	4-75-4 /-5	Joint with Damper*	1	1	1	1	1	1	1
10	800-4-75-14-0-5	Ring for gas spring						2	2
11	800-4-75-14	Reinforcement ring						1	1

*) Spare Parts List for joint with Damper – see General information

When ordering spare parts please quote:

Product No.	eg.:	75-3535-3-5 (white)
Description	-	A-pipe 350
Part No.	-	3-7535-8-5
Quantity	-	1 pc.

If you wish to customize the arm with a spare part which is not a constituent part of the particular model, please contact your Alsident dealer.



Mounting Instruction

With internal spring

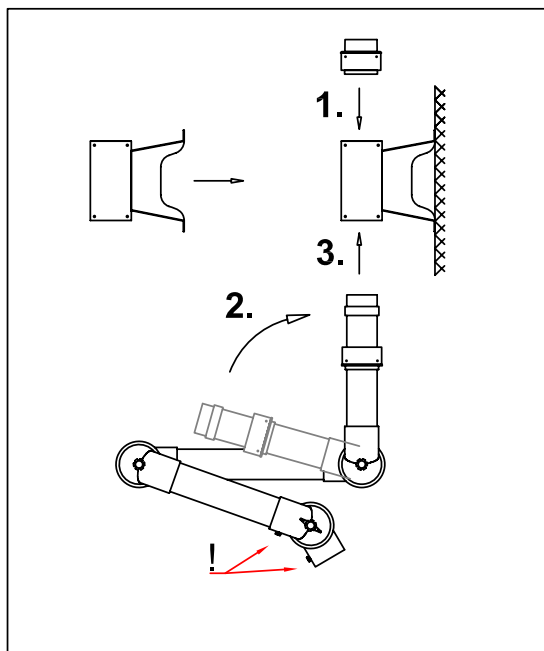


Fig. 1:

1. Fasten the wall bracket solidly to the wall or column. When mounting the wall bracket be aware of the considerable strain the operation of the arm will transmit to the bracket.
2. Place the other square-guide in the top of the bracket (1) and fasten it to the wall bracket with the included screws.
3. Considering the internal spring, it is important to turn the socket pipe in the direction of the arrow (2) and that the fingerscrews (!) are faced forward.
4. Place the socket pipe in the wall bracket (3) and fasten the square-guide with the included screws.
5. The extraction arm can be turned 190° in the wall bracket.

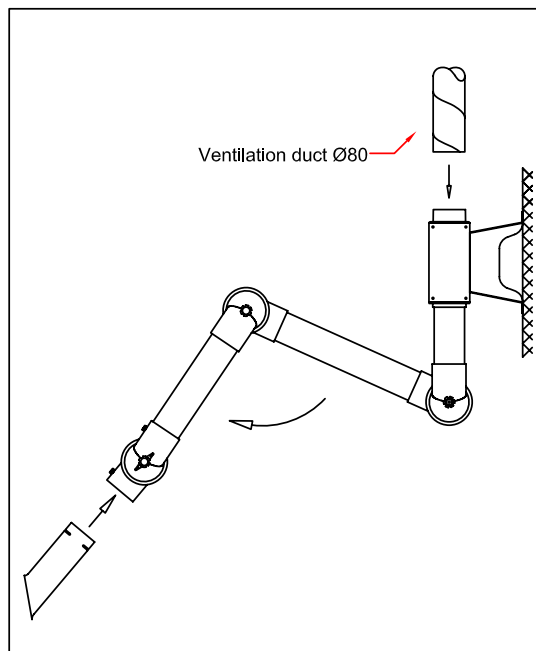


Fig. 2:

1. Connect the main ventilation duct (80 mm dia.) directly to the top of the wall bracket.
2. Unfold the extraction arm in the direction of the arrow.
3. Place the connection pipe of the accessory in the joint. Turn the slit on the connection pipe towards the small fingerscrew on the joint. When screwed in the fingerscrew will hold the accessory in place in the joint.
4. Finally make sure the damper is open.
5. The extraction arm is now ready for use.



Mounting Instruction

With gas spring

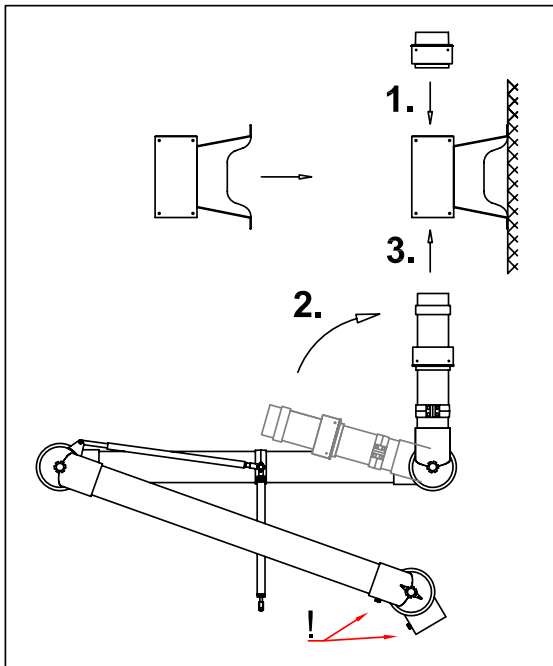


Fig. 1:

1. Fasten the wall bracket solidly to the wall or column. When mounting the wall bracket be aware of the considerable strain the operation of the arm will transmit to the bracket.
2. Place the other square-guide in the top of the bracket (1) and fasten it to the bracket.
3. When unfolding the extraction arm, make sure the socket pipe is turned in the direction of the arrow (2) and that the fingerscrews (!) are faced forward.
4. Place the socket pipe in the hole of the bracket (3) and fasten the square-guide with the included screws.
5. The extraction arm can be turned 190° in the wall bracket.

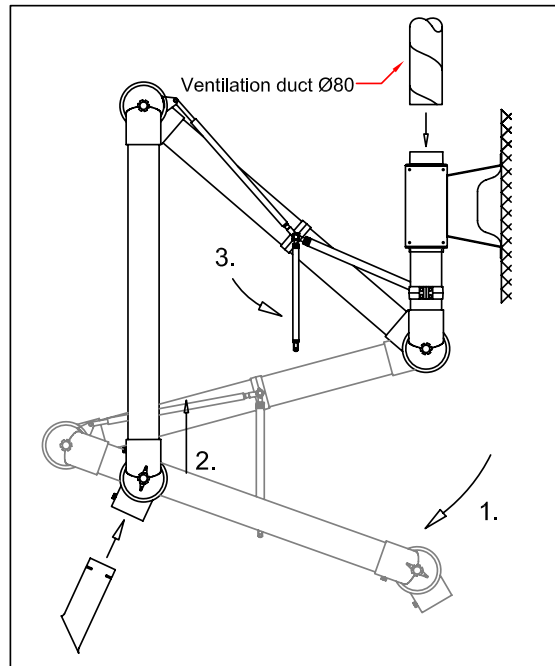


Fig. 2:

1. Unfold the extraction arm in the direction of the arrow (1).
2. Push the extraction arm towards vertical position (2).
3. Turn the gas spring towards the fitting on the socket pipe and fasten it with the fingerscrew (3).
4. Connect the main ventilation duct (80 mm dia.) directly to the top of the wall bracket.
5. Place the connection pipe of the accessory in the joint. Turn the slit on the connection pipe towards the small fingerscrew. When screwed in the fingerscrew will hold the accessory in place in the joint.
6. Finally make sure the damper is open.
7. The extraction arm is now ready for use.



Working Area

Ceiling Mounted with Extractor tube

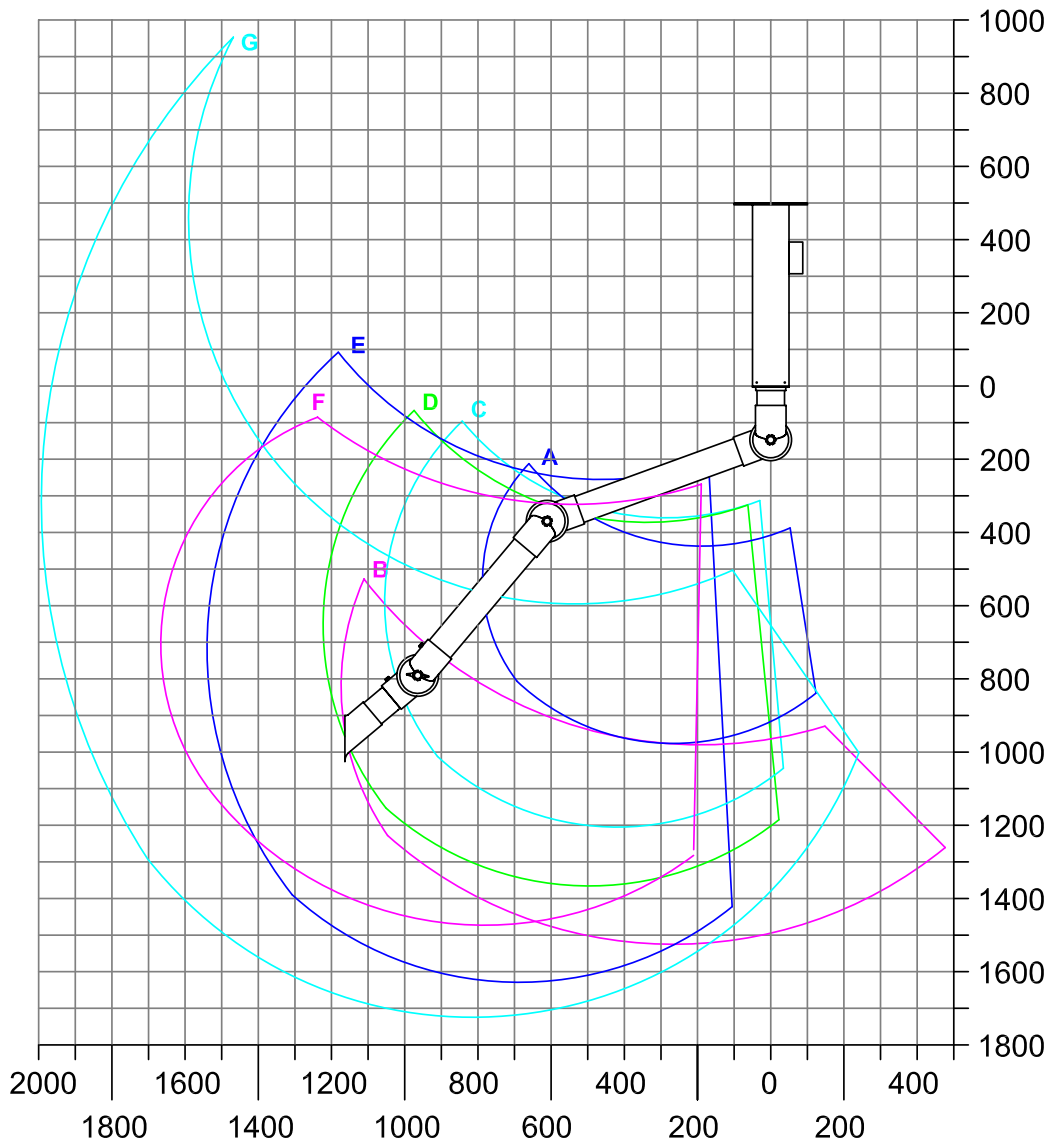
SYSTEM 25

SYSTEM 50

SYSTEM 63

SYSTEM 75 PP

SYSTEM 100



- | | |
|---------------------------|------------|
| A: Model 75-3535-3-7-5 | R: 795 mm |
| B: Model 75-3590-3-7-5 | R: 1220 mm |
| C: Model 75-5545-3-7-5 | R: 1060 mm |
| D: Model 75-6555-3-7-5 | R: 1230 mm |
| E: Model 75-9065-3-7-5 | R: 1550 mm |
| F: Model 75-9065-3-22-7-5 | R: 1660 mm |
| G: Model 75-9090-3-22-7-5 | R: 1990 mm |

Accessory: Extractor tube nr. 1-7525-7-5

Note:

The working area of the arm is defined from the center of the opening of the accessory.

The working area changes according to type of accessory and positioning.

When choosing the arm we recommend that the stationary working position of the accessory is not placed in the highest or lowest part of the working area.

(All measurements in mm)

Mounting Options



SYSTEM 25

SYSTEM 50

SYSTEM 63

SYSTEM 75 PP

SYSTEM 100

Ceiling Mounted Option

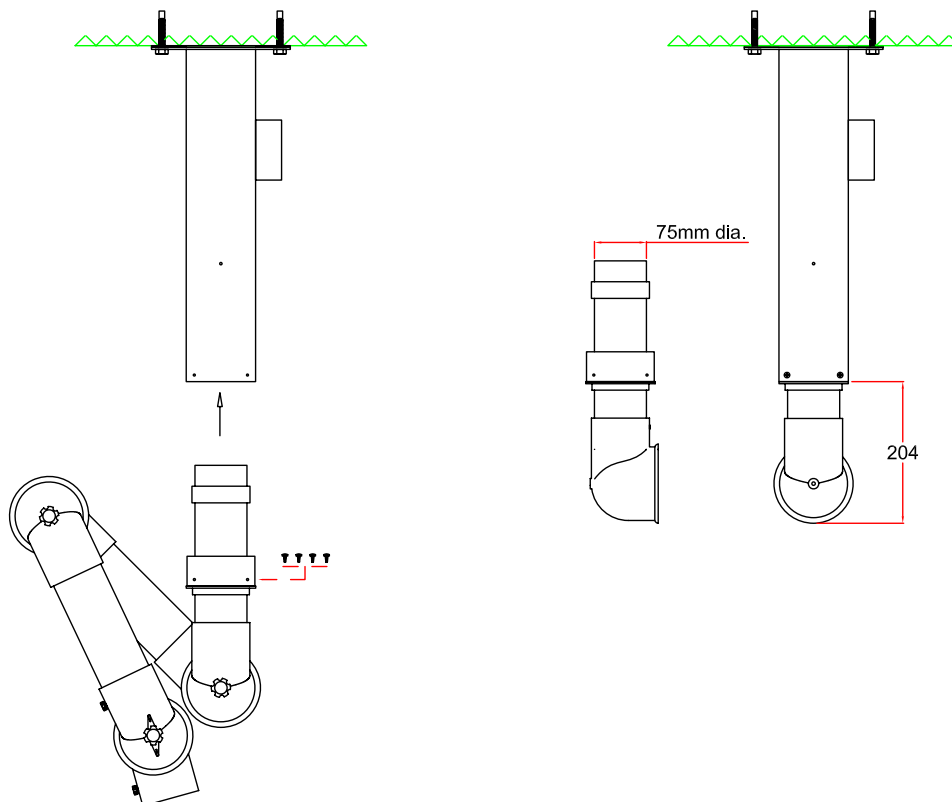
Ceiling Mounted

System 75 Extraction Arm ceiling mounted with ceiling column with side connection.

Accessory

Ceiling Column, Part No. depending on lengths.

Dimensions



(All measurements in mm)



Ceiling Column

Technical Description

Ceiling columns

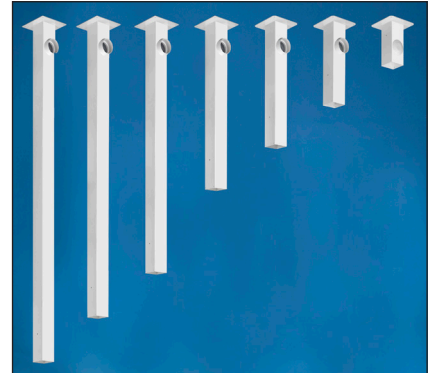
Used for mounting the System 75 Ceiling Mounted Extraction Arms. The ceiling column is made of steel with a white polyester powder coating. Available in two models with side connection or top connection to duct. For standard lengths see below.

Other lengths, colours or acidproof stainless steel (AISI 316L) available on request.

Connection diameter

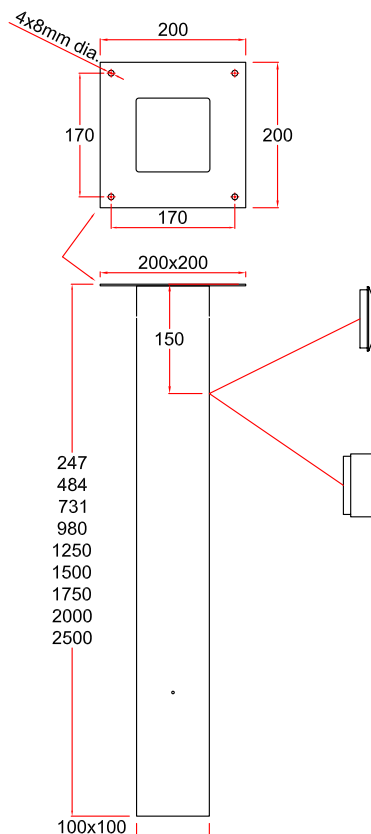
With side connection: 80 mm

With top connection: max.100 mm



Length [mm]	Weight app. [kg]	Top connection	Side connection
250	2.0	2-250-20	-
500	3.0	2-500-20	2-500-80
750	3.8	2-750-20	2-750-80
1000	4.5	2-1000-20	2-1000-80
1250	5.4	2-1250-20	2-1250-80
1500	6.1	2-1500-20	2-1500-80
1750	7.1	2-1750-20	2-1750-80
2000	7.9	2-2000-20	2-2000-80
2500	9.4	2-2500-20	2-2500-80

Dimensions



(All measurements in mm)

Spare Parts



SYSTEM 25

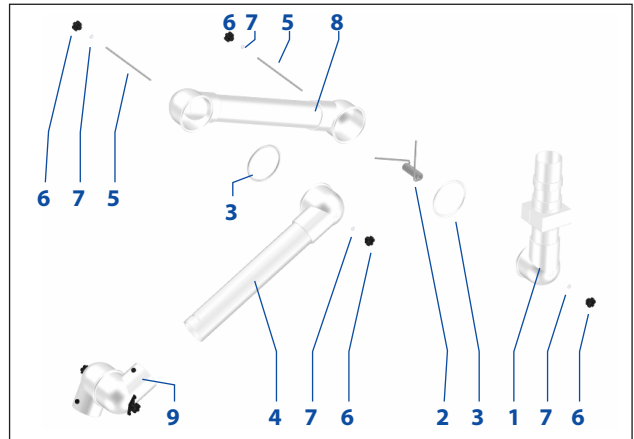
SYSTEM 50

SYSTEM 63

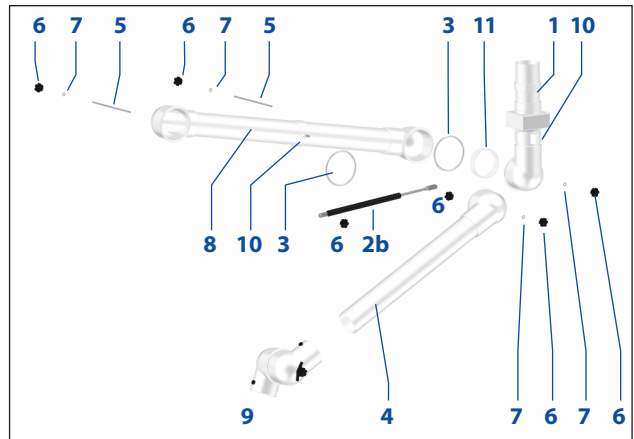
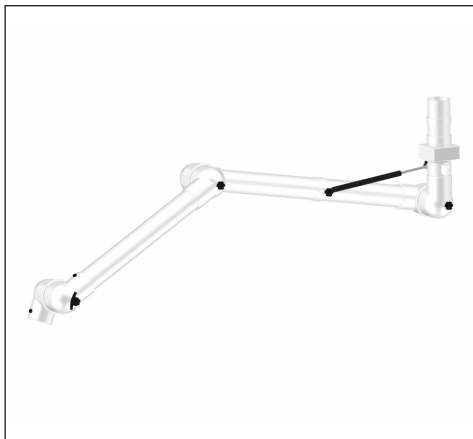
SYSTEM 75 PP

SYSTEM 100

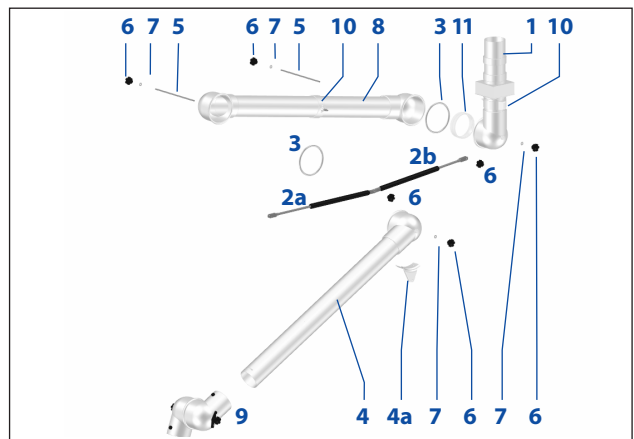
(A) 75-3535-3-7 (B) 75-3590-3-7 (C) 75-5545-3-7 (D) 75-6555-3-7 (E) 75-9065-3-7



(F) 75-9065-3-22-7



(H) 75-9090-3-22-7



Spare Parts List – see next page



Spare Parts List

SYSTEM 25

Pos.	Product No.	Red	White	Joints
A	75-3535-3-7	-4	-5	3-led
B	75-3590-3-7	-4	-5	3-led
C	75-5545-3-7	-4	-5	3-led
D	75-6555-3-7	-4	-5	3-led
E	75-9065-3-7	-4	-5	3-led
F	75-9065-3-22-7	-4	-5	3-led
G	75-9090-3-22-7	-4	-5	3-led

SYSTEM 50

Pos.	Part No.	Description	A [pieces applied]	B	C	D	E	F	G
1	3-7530-3-7-4 /-5	C-pipe CM 300	1	1	1	1	1	1	1
2	5-75-3-4-00	Spring WM/CM 4 mm	1						
2	5-75-3-5-00	Spring WM/CM 5 mm		1	1	1			
2	5-75-3-6-00	Spring WM/CM 6 mm					1		
2a	800-100-100-1-050	Gas Spring 100N (Push)							1
2b	800-100-150-2-050	Gas Spring 150N (Pull)						1	1
3	5-100-6	O-ring	2	2	2	2	2	2	2
4	3-7535-9-7-4 /-5	B-pipe 350	1						
4	3-7545-9-7-4 /-5	B-pipe 450			1				
4	3-7555-9-7-4 /-5	B-pipe 550				1			
4	3-7565-9-7-4 /-5	B-pipe 650					1	1	
4	3-7590-9-7-4 /-5	B-pipe 900		1					1
4a	4-100-01-5	Angle for joint B							1
5	5-75-5-211	Threaded Stay	2	2	2	2	2	2	2
6	5-75-5	Thumbscrew	4	4	4	4	4	6	6
7	5-75	Teflon Washer	4	4	4	4	4	4	4
8	3-7535-8-7-4 /-5	A-pipe 350	1	1					
8	3-7555-8-7-4 /-5	A-pipe 550			1				
8	3-7565-8-7-4 /-5	A-pipe 650				1			
8	3-7590-8-7-4 /-5	A-pipe 900					1		
8	3-7590-0-7-8-4 /-5	A-pipe 900 gas spring						1	1
9	4-75-4 /-5	Joint with Damper*	1	1	1	1	1	1	1
10	800-4-75-14-0-5	Ring for gas spring						2	2
11	800-4-75-14	Reinforcement ring						1	1

SYSTEM 63

SYSTEM 75 PP

*) Spare Parts List for joint with Damper – see General information

When ordering spare parts please quote:

Product No.	eg.:	75-3535-3-5 (white)
Description	-	A-pipe 350
Part No.	-	3-7535-8-5
Quantity	-	1 pc.

If you wish to customize the arm with a spare part which is not a constituent part of the particular model, please contact your Alsident dealer.

SYSTEM 100



Mounting Instruction

With internal spring

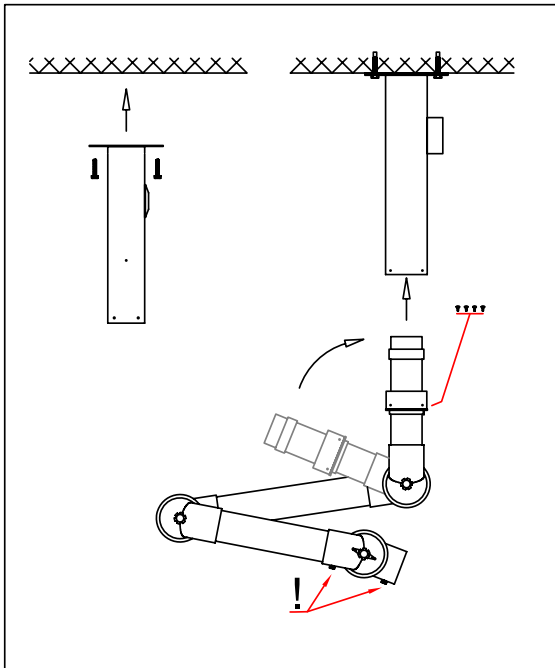


Fig. 1:

1. Mount the column under the ceiling.
2. The operation of the extraction arm will transmit a considerable strain to the column. The column must therefore be mounted on a solid ceiling.
3. Considering the internal spring, it is important to turn the socket pipe in the direction of the arrow and that the fingerscrews (!) are faced forward.
4. Place the socket pipe in the ceiling column and fasten the square-guide with the included screws.
5. The extraction arm can now be turned 360° in the column.

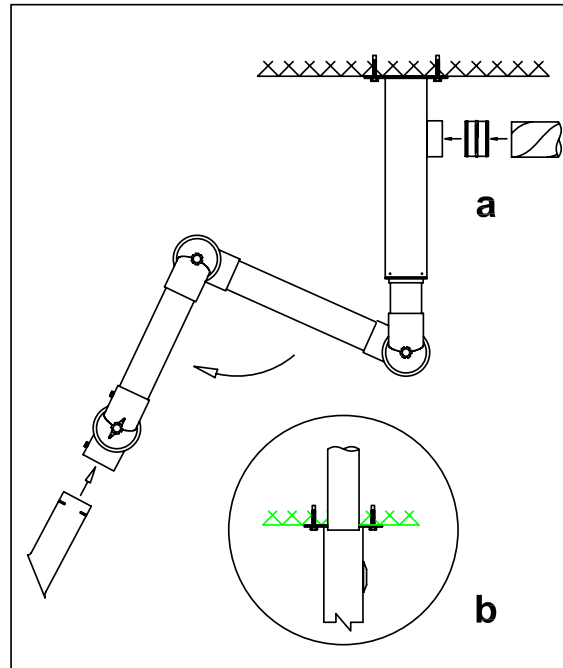


Fig. 2:

1. For side connection (fig. 2a) the main ventilation duct (80mm dia.) can be connected to the outlet on the side of the column with a nipple - or directly to the outlet. For top connection (fig. 2b) the main ventilation duct is put through the ceiling and directly into the column. Make sure to tighten the gap between the ceiling and duct with a filler.
2. Unfold the extraction arm in the direction of the arrow.
3. Place the connection pipe of the accessory in the joint. Turn the small slit in the connection pipe towards the fingerscrew. When screwed in the fingerscrew will hold the accessory in place in the joint.
4. Finally make sure the damper is open.
5. The extraction arm is now ready for use.



Mounting Instruction

With gas spring

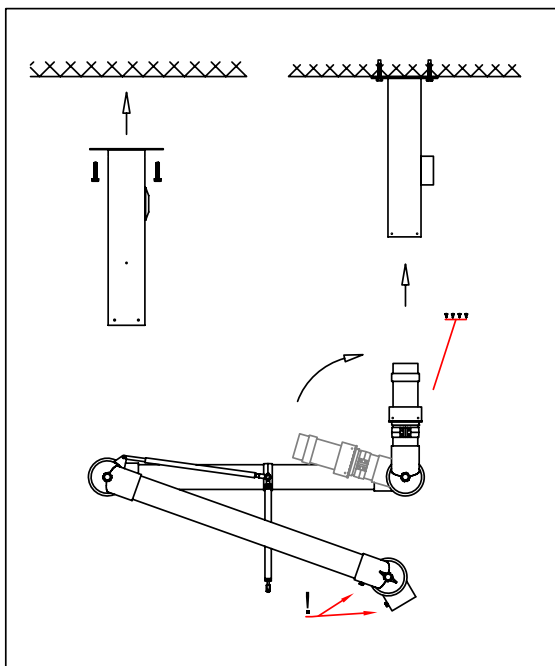


Fig. 1:

1. Mount the column under the ceiling.
2. The operation of the extraction arm will transmit a considerable strain to the column. The column must therefore be mounted on a solid ceiling.
3. When unfolding the extraction arm, make sure the socket pipe is turned in the direction of the arrow and the fingerscrews (!) are faced forward.
4. Place the socket pipe in the hole of the bracket and fasten the square-guide with the included screws.
5. The extraction arm can now be turned 360° in the column.

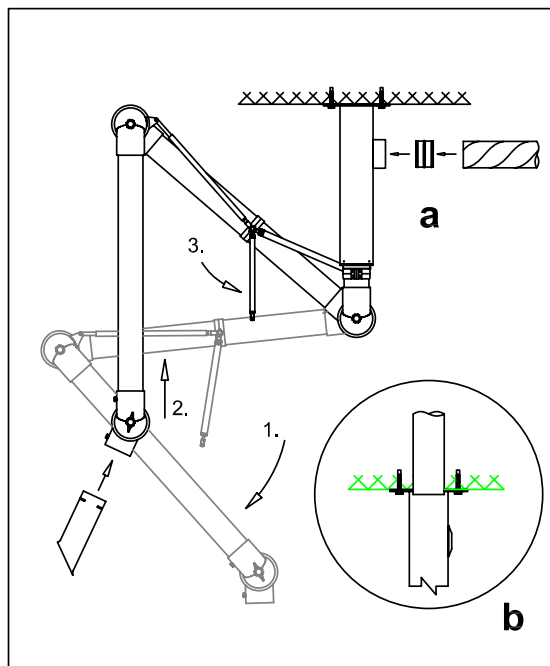


Fig. 2:

1. For side connection (fig. 2a) the main ventilation duct (80mm dia.) can be connected to the outlet on the side of the column with a nipple - or directly to the outlet.
For top connection (fig. 2b) the main ventilation duct is put through the ceiling and directly into the column. Make sure to seal the gap between the ceiling and duct with a filler.
2. Unfold the extraction arm in the direction of the arrow (1).
3. Push the extraction arm towards vertical position. This enables the gas spring to be mounted (2).
4. Turn the gas spring towards the fitting on the socket pipe and fasten it with the fingerscrew (3).
5. Place the connection pipe of the accessory in the joint. Turn the slit on the connection pipe towards the small fingerscrew. When screwed in the fingerscrew will hold the accessory in place in the joint.
6. Finally make sure the damper is open.
7. The extraction arm is now ready for use.